

1 May 2023

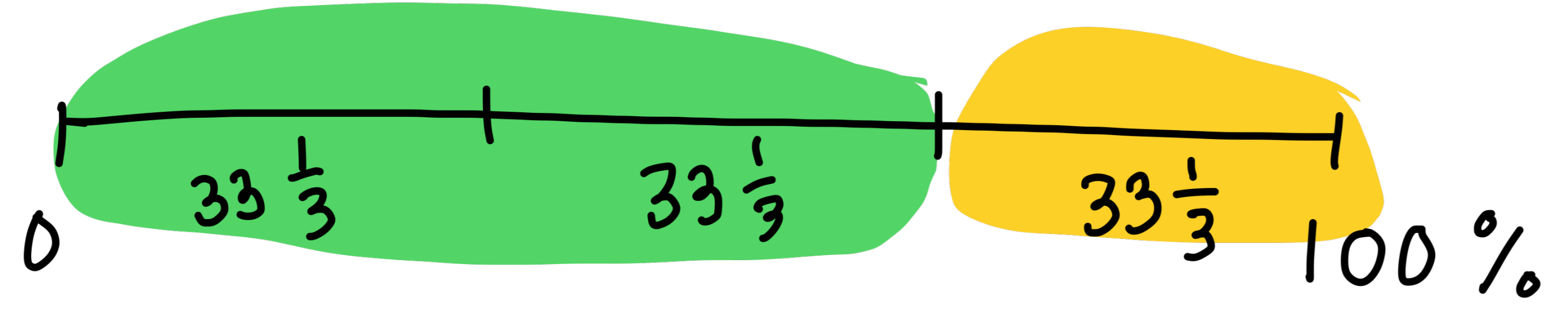
* Finish Ex 11.4 Q1-5 Pg 117

* End of Unit Review Pg 119

Q1-6 NO Calc

Q7-12 Calc

$33\frac{1}{3}\% = \frac{1}{3} = \div 3$



$66\frac{2}{3}\% = \frac{2}{3} = \times 2 \div 3$

Homework for Tuesday
Complete End of Unit Review

$27 \times 2 = 54 \div 3 = 18$

3 May 2023

Graphs

Pg 130 Eg. 13.1

$y = 2x - 4$

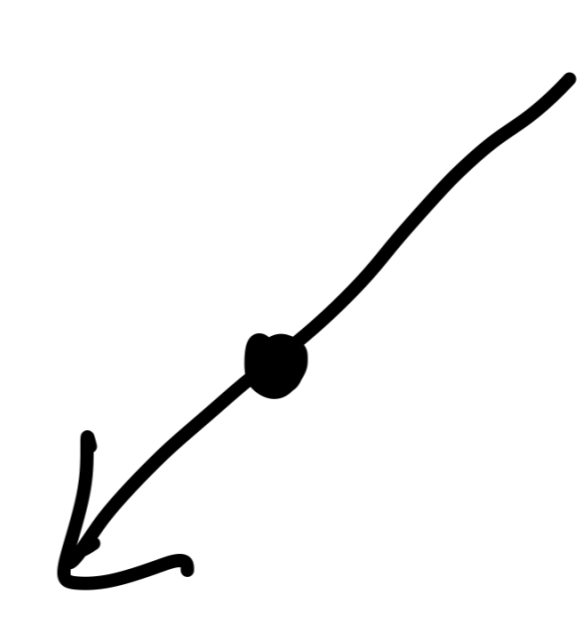
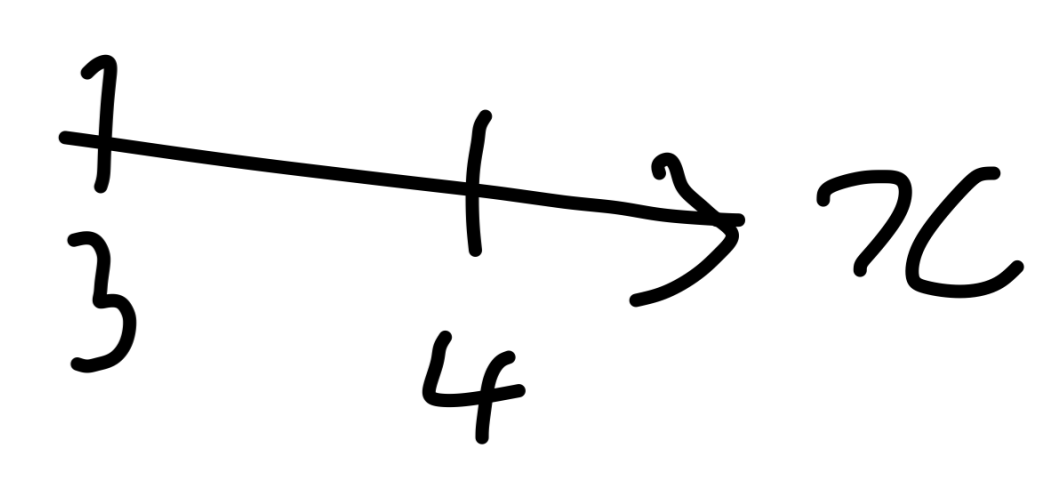
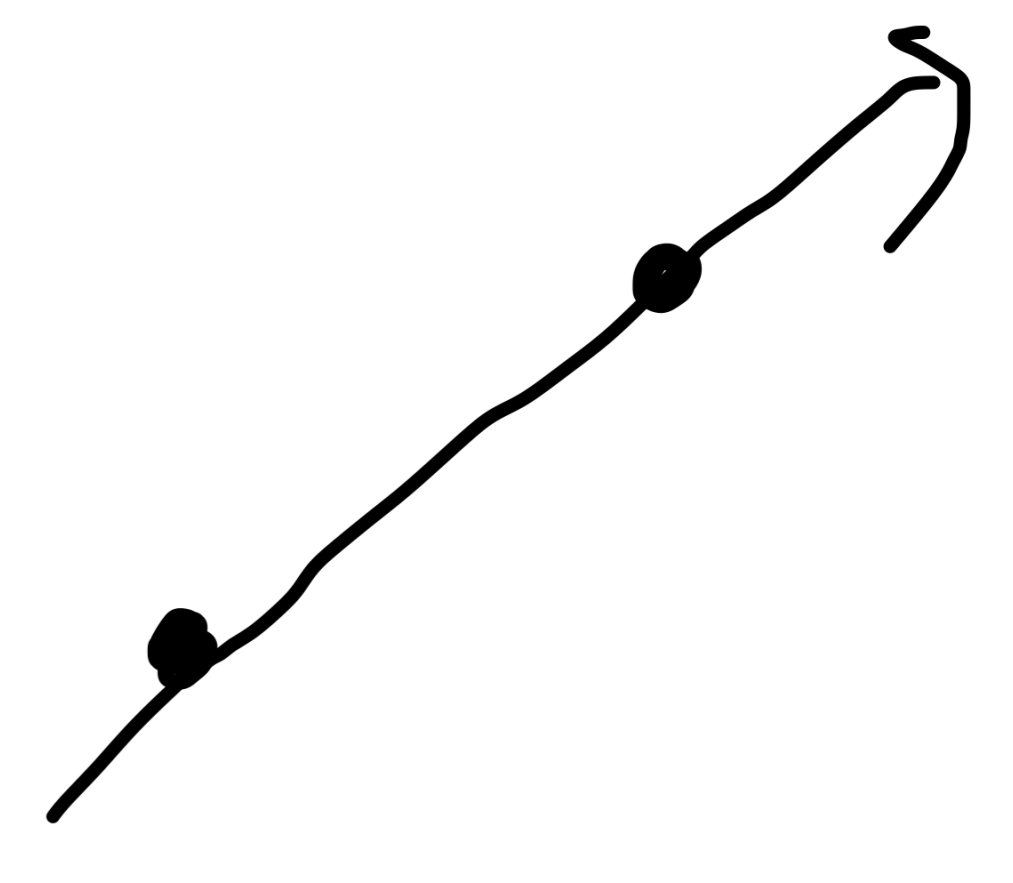
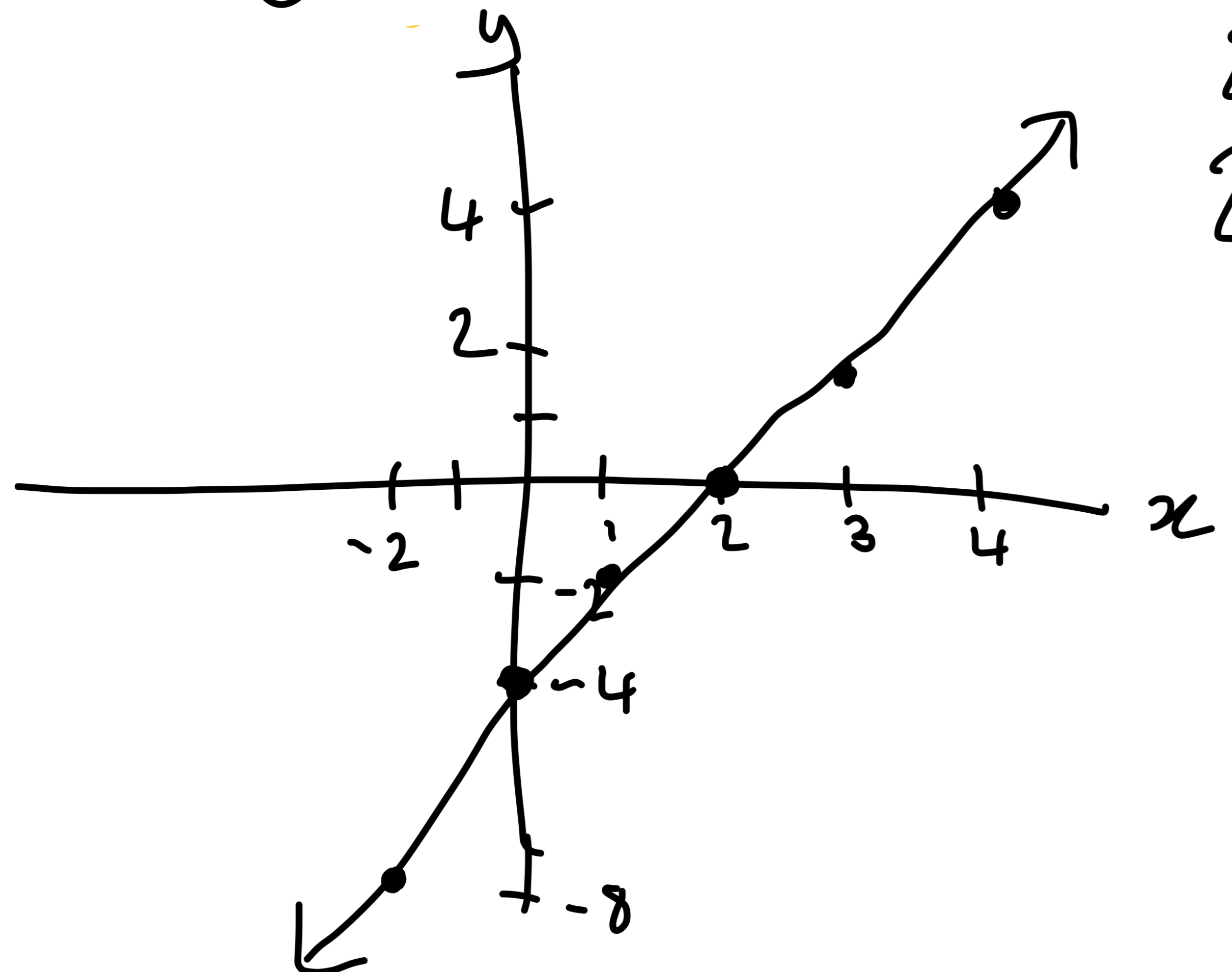
x	-2	-1	0	1	2	3	4
y	-8	-6	-4	-2	0	2	4

$y = 2x - 4$

$2(-1) - 4 = -6$

$2(0) - 4 = -4$

$2(1) - 4 = -2$



Pg 131 Ex 13.1